



Built on
IBM | express
advantage™
offerings

Integrated protection from real-time threats

Integrated Protection



COST EFFECTIVE MULTI-THREAT PROTECTION

- 1 NetBox Blue's** unified threat management & productivity suite
- 2 IBM's** world class hardware and on-site support
- 3 NetBox Blue's** real-time service management

Never before has the network been so crucial to business. And never before has there been a better way to secure a company's network from attack. NetBox Blue's approach, using IBM's hardware platforms, is the ultimate answer to the ever increasing number of internal and external risks that threaten the network and the security of businesses globally.

The 'Blue on Blue' UTM (Unified Threat Management) solution seamlessly combines the best technologies with the most reliable hardware platform to deliver a world class solution to business. The solution brings together a sophisticated security suite with the tools to monitor and manage the network. It ensures that the network is completely transparent and enables managers to assemble a comprehensive picture of how the network is being used or abused.

This union replaces disparate products that fail to solve all of the issues, cause conflicts and are difficult to manage. The solution is easy to implement and offers a dependable and innovative means of protection. The internet should be as dependable as any other utility. The semi-managed, integrated solution gives companies a service they can depend on and the peace of mind they deserve from world class technology providers.

Cost effective multi-threat protection – what's in the 'Blue on Blue' UTM?

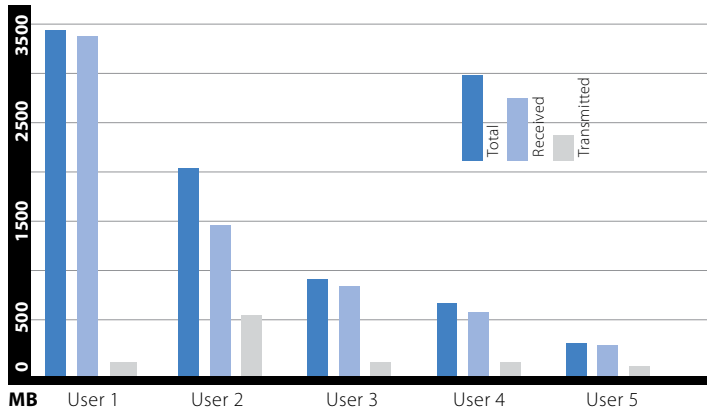
- 1. NetBox Blue's** proven threat and productivity management software suite offers the world's most comprehensive security, management and content filtering together with automated reporting tools.
- 2. NetBox Blue's 24 x 7 Service Management** offers transparent real-time updates, back-up and restore of all policy settings and remote global monitoring .
- 3. IBM** provides the glue – world class hardware platforms, global on-site support and scalability.



netboxblue.com

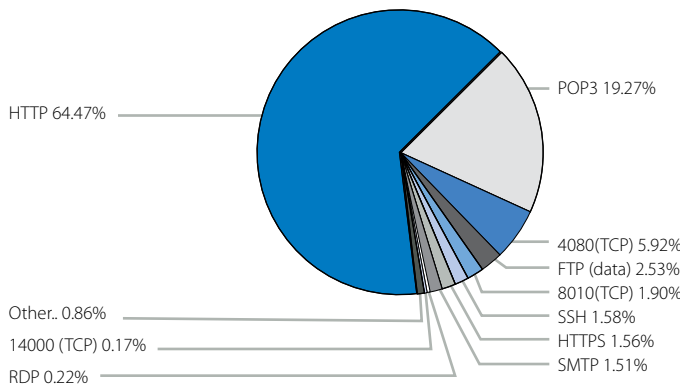
Top Local Users Report

Provides a breakdown of the data that is received and transmitted by the most active users of your internet service. Further analysis can then be viewed as required.



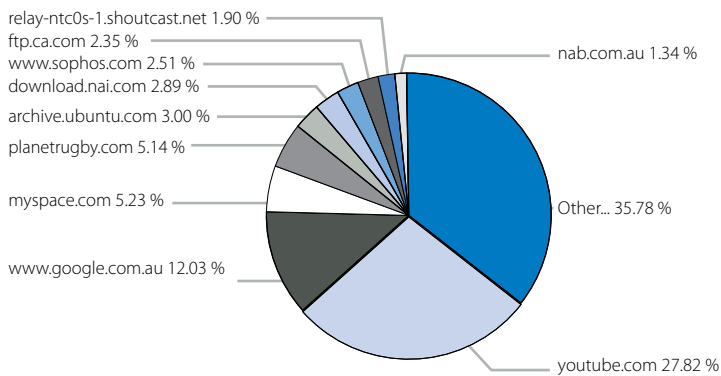
Top Ports/Protocols Report

Offers visibility of how the internet service is being used. Further analysis can then be viewed as required.



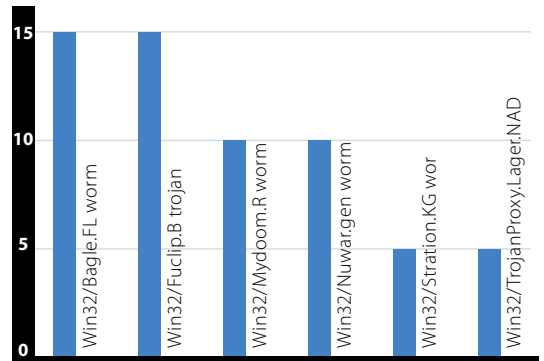
Top Remote Sites Report

Gives analysis on company-wide internet browsing activity. Inappropriate use can then be identified by users and control policies implemented.



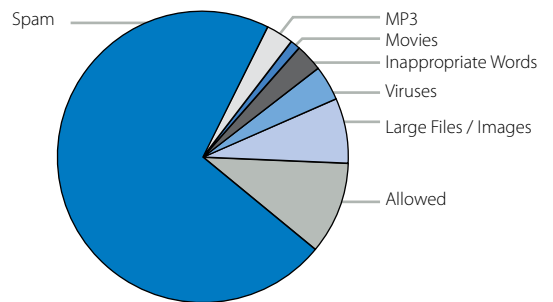
Email Virus Detection Report

Shows you the viruses that are being blocked by the NetBox.



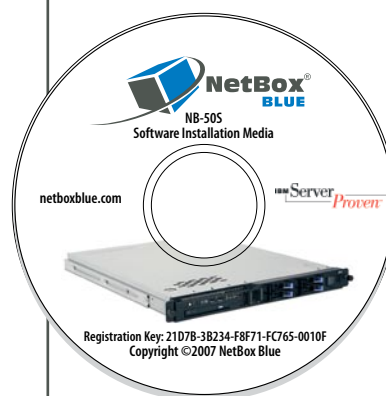
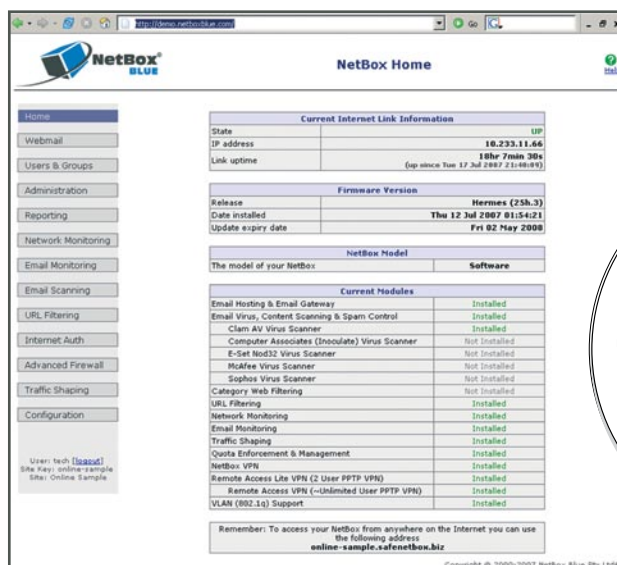
Email Rules Report

Reports on the rules and policies that have been triggered for the company for both monitoring and policy enforcement.



Remote Sites	Bytes Transferred	%
youtube.com	4922M	27.82
www.google.com.au	2128M	12.03
myspace.com	924M	5.23
planetrugby.com	909M	5.14
archive.ubuntu.com	531M	3.00
download.nai.com	511M	2.89
www.sophos.com	443M	2.51
ftp.ca.com	415M	2.35
relay-ntc0s-1.shoutcast.net	336M	1.90
nab.com.au	237M	1.34
Other...	6330M	35.78
Total	17.6G	100.00

Simple implementation and ongoing management.
Integrated security and productivity management.



Anti-virus and Anti-malware	Proactive protection against viruses, worms, Trojans, spyware, adware, phishing, rootkits and other malicious threats
Advanced spam filtering	SMTP blocking prevents spam download from the internet and advanced filtering technologies provide maximum protection and reliability
URL filtering	Control and management of internet use
Application layer firewall	Detailed analysis of each packet and stream, combined with advanced management and policy control options
VPN	Optimized site to site and remote access support
Email hosting and gateway	Providing simple email management and administration in-house whilst reducing server load
Network monitoring	Detailed analysis and control of network use for administrative control and productivity management
Email monitoring	Scanning and logging of all inbound and outbound email with full content filtering
Traffic shaping	Intelligently prioritize bandwidth-hungry and critical traffic maximising the efficiency of available bandwidth
Bandwidth aggregation	Combine multiple links for inexpensive additional bandwidth demands and fault tolerance
ISP failover	Real-time redundancy for any link failure, even for hosted services (e.g. mail)
Quota management	Control network usage and guard against network abuse as well as offering restricted guest access facilities
Full reporting suite	Web based graphical user interface for secure remote access. Automated reporting both on demand and scheduled via email

Platform

- Runs on IBM System x or BladeCenter running VMware.
- NetBox Blue's hardened Linux operating system and intelligent core.
- Full boundary scalability and resilience can be built into any solution.
- SMB solution optionally offered on NetBox Blue Hardware.

Ease of set up

- CD, download or pre-installed – bare metal, turns the IBM server into an appliance.
- Just 3 connections are required - power, internet and LAN.
- Wizard-based set up, via a web interface for local and remote management.
- Recommended default settings minimise the amount of configuration required.
- Full customisation available.

Managed service

- Push technology provides antivirus, security and feature updates in real time.
- Remote "heartbeat" monitoring and backup with proactive recovery.
- Ongoing backup of user settings and remote restore available in minutes.

Support

- NetBox Blue delivers automatic software updates using push technology.
- Full on-line help and support tools.
- IBM delivers the on-site hardware support.

NetBox Blue is one of the leading providers of internet security and management tools. NetBox Blue's proven technology is now relied on by over 50,000 worldwide business customers including secure Government Departments, Qantas, NAB and a host of small and mid-sized customers.

IBM is the leading global provider of open standards-based systems, servers and storage systems. With a global support organization that can deliver true 24x7 support, IBM delivers peace of mind to small and large customers.



Built on



NetBox Blue and IBM offer the ultimate solution for threat and productivity management.

One license. Global support. Total reassurance.

For further details please contact your local IBM Business Partner or contact sales@netboxblue.com

netboxblue.com

Copyright © 2007 IBM and NetBox Blue. All rights reserved. Trademarks used herein are trademarks or registered trademarks of their respective owners.

