

## IBM Content Collector

---

### Highlights

---

- ***Addresses key needs that drive content collection and archiving, including archiving e-mail and content for storage space management, managing e-mail and content to meet legal obligations, connecting e-mail and disconnected content to other managed content, and managing e-mail and content as part of a business process***
- ***Employs a modular, extensible architecture that lets you add new content types and capabilities as business requires***
- ***Provides capabilities for leveraging advanced classification, records management, eDiscovery and content-centric business process management capabilities as part of an ECM platform***



### **Optimizing the value of your organization's content**

In today's competitive business environment, you can't afford to drop your e-mail and other content into a siloed archive and never see it again.

You need to use your content for a business advantage—by taking control of information to better meet your legal obligations, connecting content so you can manage it together, integrating content with your business processes and lowering your total cost of ownership (TCO). You need to better manage your storage space. And you need to replace the common jumble of piece-part point products with modular, integrated solutions.

The resulting ability to better collect, enhance and manage enterprise e-mail and content can keep your organization ahead of the curve.

So how can you turn your content into an opportunity? Out-of-the-box advanced functionality in modular, extensible IBM Content Collector software can help you make the casually created, contributed and consumed information in your business more accessible, manageable and ultimately more usable. Moreover, with a lower TCO—and the ability to grow at your own pace—you can also keep costs in check even as content volumes and business needs grow.

**Delivering more capabilities than point e-mail archiving solutions**

Content Collector is at the forefront of content collection and archiving solutions, which collect, enhance and manage e-mail and multiple content types—independently of the application used to create the content or the technology used to store it. With Content Collector, you can do more than just archive your information—you can start using it for business advantage.

**More than e-mail: Collect**

The Content Collector approach enables you to monitor, identify and collect virtually all electronic content types from all locations including casually created content and information in existing archive silo systems. A significant advance over conventional e-mail archiving point solutions, Content Collector can collect—in addition to e-mail—Microsoft® Office files, collaborative documents created in the Microsoft SharePoint environment and more.

**More than archiving: Enhance**

Content Collector does more than simply move your content. It enhances content by tasking, filtering, transforming, extracting metadata, customizing, and more—including multiple classification options—with no costly custom integration required and with no burden on the end user. Content

Collector is powered by IBM ZeroClick technology, which uses process, events, rules, metadata and advanced classification to transparently enforce policy throughout the entire compliant information life cycle.

**More than an isolated solution: Manage**

With Content Collector, you can manage content as part of an enterprise content management (ECM) platform and information infrastructure—not a silo—to unlock value while leveraging existing investments. Importantly, its extensible architecture leverages investments and best practices from ECM systems from IBM, without requiring complex services engagements.

**Enhancing flexibility with a modular, extensible architecture**

The ability of Content Collector to handle a range of content types and sources, to add access to new sources and to add new capabilities as needed is based in the solution's modular, extensible architecture. A flexible set of source connectors, task connectors and target connectors can be mixed and matched to create the functionality that users require from the technologies they already have installed.

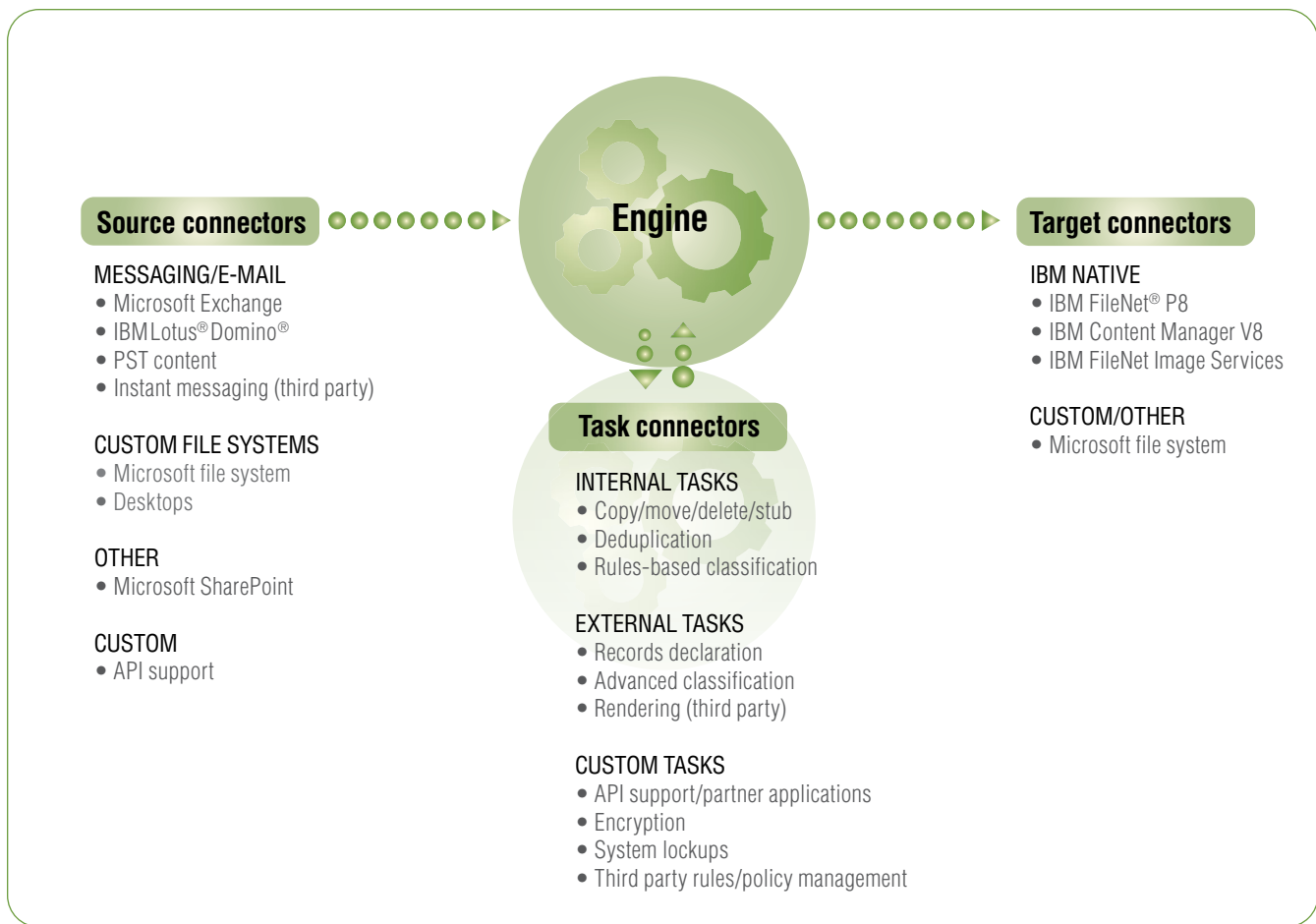
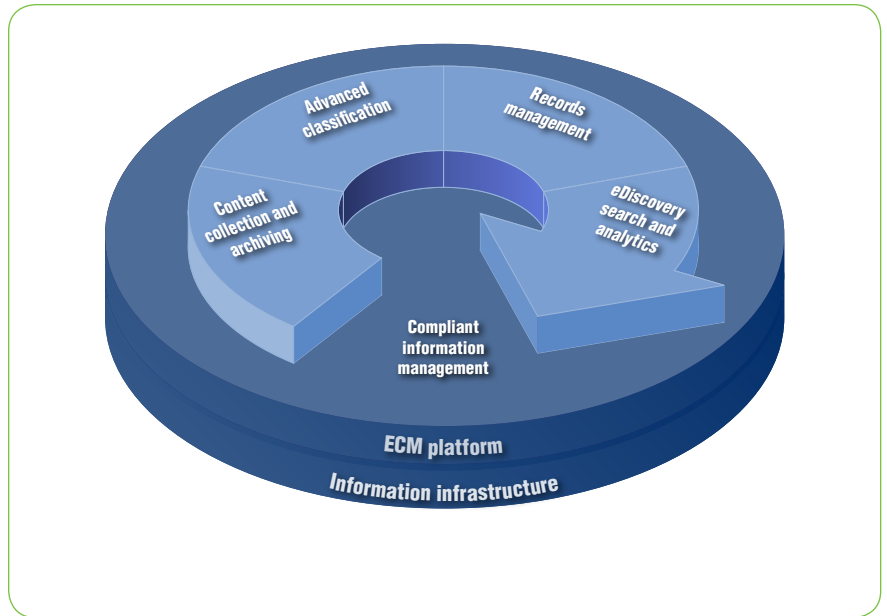


Figure 1: Content collection and archiving offerings from IBM feature a modular, extensible architecture that provides the flexibility to grow with your needs.

**Integrating with a comprehensive portfolio of compliance tools**

Content Collector integrates with IBM Classification Module, IBM Records Manager, IBM FileNet Records Manager, IBM eDiscovery Manager and IBM eDiscovery Analyzer software. It enables a comprehensive solution that includes advanced classification, records management, electronic discovery (eDiscovery) searches and analytics for the entire compliant information management life cycle—and it allows you to manage information for compliance in a security-rich, auditable manner.



*Figure 2: The content collection and archiving capabilities of Content Collector integrate with advanced classification, records management, and eDiscovery search and analytics capabilities in your ECM environment. They also integrate with IBM information infrastructure solutions designed to deliver improved service levels, reduce business risks and manage today's rapidly growing volumes of business information. The result—optimized processes throughout the life cycle of compliant information management.*

## Meeting content collection and archiving needs with comprehensive capabilities

Content Collector will have two solution offerings: IBM Content Collector for Email and IBM Content Collector for File Systems software.

### Common capabilities

Both offerings share powerful capabilities that can help you:

- *Simplify and enhance configuration.*
  - Shortens initial installation and base configuration to as little as one hour, not including source systems or target repository
  - Enables task routes to be easily configured, reviewed and modified via a configuration designer
  - Allows extending the modular architecture by adding custom sources and tasks

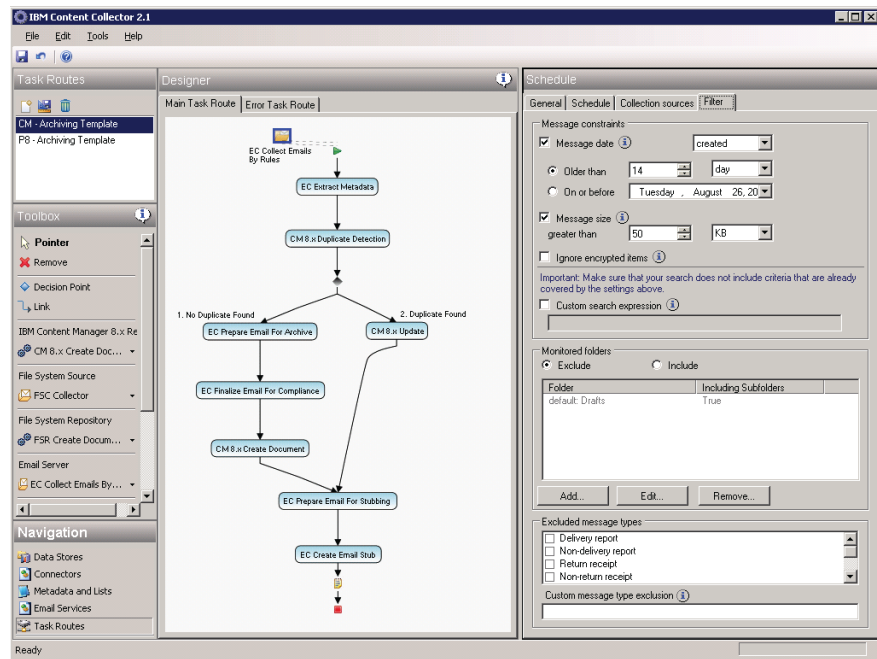


Figure 3: Content Collector task routing supports more than archiving by enabling flexible routing and configuration for processing of internal and external instructions, or tasks.

- *Reduce organizational risk, ensure consistency, lower cost and improve productivity with powerful enhancement options enabled by IBM ZeroClick technology, including:*
  - *Automated, policy-driven collection and archiving of e-mail and content.*
  - *The ability to base policies on metadata such as sender, sent date, e-mail domain, or file folder structure or location.*
  - *Keyword matching and pattern matching.*
  - *The ability to plug into multiple forms of classification including the IBM Classification Module.*
  - *Options for manual collection and archiving for e-mail and content.*
  - *The ability to capture meta-data and use it with other ECM capabilities including eDiscovery, records management and business process management.*
  - *Options for leaving source e-mail and content in place, moving it, flagging it as captured, stubbing it or deleting it.*

#### **IBM Content Collector for Email, Version 2.1 software**

An automated, flexible and scalable answer to the challenge of managing e-mail, this offering supports IBM Content Manager, Version 8 or IBM FileNet P8 software. It provides tools designed to help you:

- *Simplify and enhance configuration.*
  - *Allows configuring multiple servers in a single instance using a single administration console, simplifying administration and enhancing high-availability and failover support*
- *Manage e-mail for legal obligations.*
  - *Provides automated, policy-driven e-mail collection and archiving using ZeroClick technology, with journaling and manual options also available.*
  - *Enables electronic discovery of e-mail using IBM eDiscovery Manager and eDiscovery Analyzer tools*

- *Connect e-mail to other managed content.*
  - *Manages e-mail along with other managed content in either IBM Content Manager or IBM FileNet P8 software*
- *Manage e-mail as part of a business process.*
  - *Automatically captures e-mail from monitored mailboxes and inserts them into business processes in IBM FileNet P8 software; also allows the option of manual capture*
- *Archive e-mail for storage space management.*
  - *Reduces storage space on e-mail servers with mailbox life-cycle management tools including stubbing and deduplication*
  - *Enables owners to manage their mailbox size by flagging e-mails to be archived*

- *Reduce the management burden and improve productivity of e-mail end users.*
  - *Supports IBM Lotus Notes® and Microsoft Exchange e-mail software*
  - *Allows mailbox owners to select e-mails for archiving*
  - *Enables users to search for e-mails in the repository based on sender and recipient information, date ranges and content*
  - *Enables users to restore e-mails to their in-box or to restub them*
  - *Enables users to view archived e-mail in their environment of choice—native Lotus Notes, IBM Lotus iNotes™, Microsoft Office Outlook, Microsoft Outlook Web Access software or in a Web browser*
  - *Provides users with offline access to their archived e-mails even when not connected to the repository*
  - *Supports collection and archiving of Microsoft Outlook (.pst) PST files*

#### **IBM Content Collector for File Systems, Version 2.1 software**

An enterprise solution supporting the Windows NTFS file format for controlling documents and content on network file-share drives, this offering supports Content Manager, Version 8, FileNet P8 and IBM FileNet Image Services software. It also supports document handling procedures that comply with corporate and regulatory policies by providing tools that help you to:

- *Manage files for legal obligations.*
  - *Classifies documents and content using metadata, rules or IBM Classification Module software*
  - *Allows changing file system security to read only at time of capture to help maintain document authenticity*

- *Connect disconnected files to other managed content.*
  - *Automatically captures documents as they are placed in a monitored location on the file share*
  - *Enables leaving documents in place, or moving, flagging or replacing them with shortcuts so users can find previously loaded documents*
- *Manage files as part of a business process.*
  - *Connects content not in the ECM repository to business processes throughout the enterprise*
  - *Permits sophisticated and targeted file handling using an advanced rules engine*
  - *Allows metadata in comma-separated value (CSV) and XML files to be automatically captured in the repository and operated upon*



## Offering solutions for the ECM installed base

If you already have an ECM solution from IBM, the modular, extensible architecture of Content Collector supports existing investments in IBM systems—either IBM Content Manager, Version 8; IBM FileNet P8, Version 4; or, in the case of IBM Content Collector for File Systems, IBM FileNet Image Services software. It enables organizations using IBM CommonStore\* or IBM FileNet Email Manager software to easily add file system management capabilities. And it enables organizations using IBM FileNet Records Crawler software to easily add e-mail management capabilities.

## Meeting the needs of non-IBM users

If you don't already have an ECM solution from IBM, Content Collector together with Content Manager, Version 8 or FileNet P8 can help you to take back control and unleash the value of your content. The modular and extensible source and task connectors in Content Collector also have the flexibility to integrate with other existing solutions.

## Why IBM?

IBM solutions for ECM enable the world's top companies to make better decisions, faster. They deliver a broad set of mission-critical solutions that help solve today's difficult business challenges: managing unstructured content, optimizing business processes and helping to satisfy complex compliance requirements. More than 13,000 organizations rely on ECM solutions from IBM to improve performance and remain competitive through innovation.

## Ordering information

IBM Content Collector for Email per user value unit LIC+SW S&S 12 MO: part number D05XQLL

IBM Content Collector for File Systems per user value unit LIC+SW S&S 12 MO: part number D05XNLL

## For more information

To learn more about IBM Content Collector software and other ECM solutions from IBM, contact your IBM representative or IBM Business Partner, or visit:

[ibm.com/software/ecm](http://ibm.com/software/ecm)

For additional details about IBM Content Collector software—including hardware and software requirements—visit:

[ibm.com/software/data/content-management/content-collector](http://ibm.com/software/data/content-management/content-collector)

© Copyright IBM Corporation 2008

IBM Corporation  
Software Group  
3565 Harbor Boulevard  
Costa Mesa, CA 92626-1420  
U.S.A.

Produced in the United States of America  
October 2008  
All Rights Reserved

IBM, the IBM logo, and [ibm.com](http://ibm.com) are trademarks or registered trademarks of International Business Machines Corporation in the United States, other countries, or both. If these and other IBM trademarked terms are marked on their first occurrence in this information with a trademark symbol (® or ™), these symbols indicate U.S. registered or common law trademarks owned by IBM at the time this information was published. Such trademarks may also be registered or common law trademarks in other countries. A current list of IBM trademarks is available on the Web at "Copyright and trademark information" at [ibm.com/legal/copytrade.shtml](http://ibm.com/legal/copytrade.shtml)

Microsoft is a trademark of Microsoft Corporation in the United States, other countries, or both.

Other company, product, or service names may be trademarks or service marks of others.

References in this publication to IBM products or services do not imply that IBM intends to make them available in all countries in which IBM operates.

The information contained in this documentation is provided for informational purposes only. While efforts were made to verify the completeness and accuracy of the information contained in this documentation, it is provided "as is" without warranty of any kind, express or implied. In addition, this information is based on IBM's current product plans and strategy, which are subject to change by IBM without notice. IBM shall not be responsible for any damages arising out of the use of, or otherwise related to, this documentation or any other documentation. Nothing contained in this documentation is intended to, nor shall have the effect of, creating any warranties or representations from IBM (or its suppliers or licensors), or altering the terms and conditions of the applicable license agreement governing the use of IBM software.

Each IBM customer is responsible for ensuring its own compliance with legal requirements. It is the customer's sole responsibility to obtain advice of competent legal counsel as to the identification and interpretation of any relevant laws and regulatory requirements that may affect the customer's business and any actions the customer may need to take to comply with such laws. IBM does not provide legal advice or represent or warrant that its services or products will ensure that the customer is in compliance with any law.

\* Certain specialized products, including CommonStore for SAP, are not changing architectures and will retain the CommonStore name.